



# COOKING

Robertshaw®



5000-851

## ELECTRIC THERMOSTATS

### 5000 Series

The Robertshaw® 5000 Series Electric Thermostat is a heavy-duty thermostat designed for use in harsh applications where precise temperature control is required. The control uses a double pole single throw (DPST) snap-action mechanism with a positive OFF switch. It is recommended for use on applications that require double pole operation and accurate temperature control.

### Features and Benefits

- DPST with positive OFF
- Mechanical snap-action is instantaneous, positive and non-fatiguing
- Reacts to exceedingly small movements of the diaphragms for very close temperature differential
- Diaphragm assembly features two stainless steel diaphragms electrically welded together
- Maximum sensitivity without over-stressing the metal
- Supplied with terminals mounted in four different positions
- Bulb and capillary available in copper, nickel plated copper, or stainless steel

### Specifications

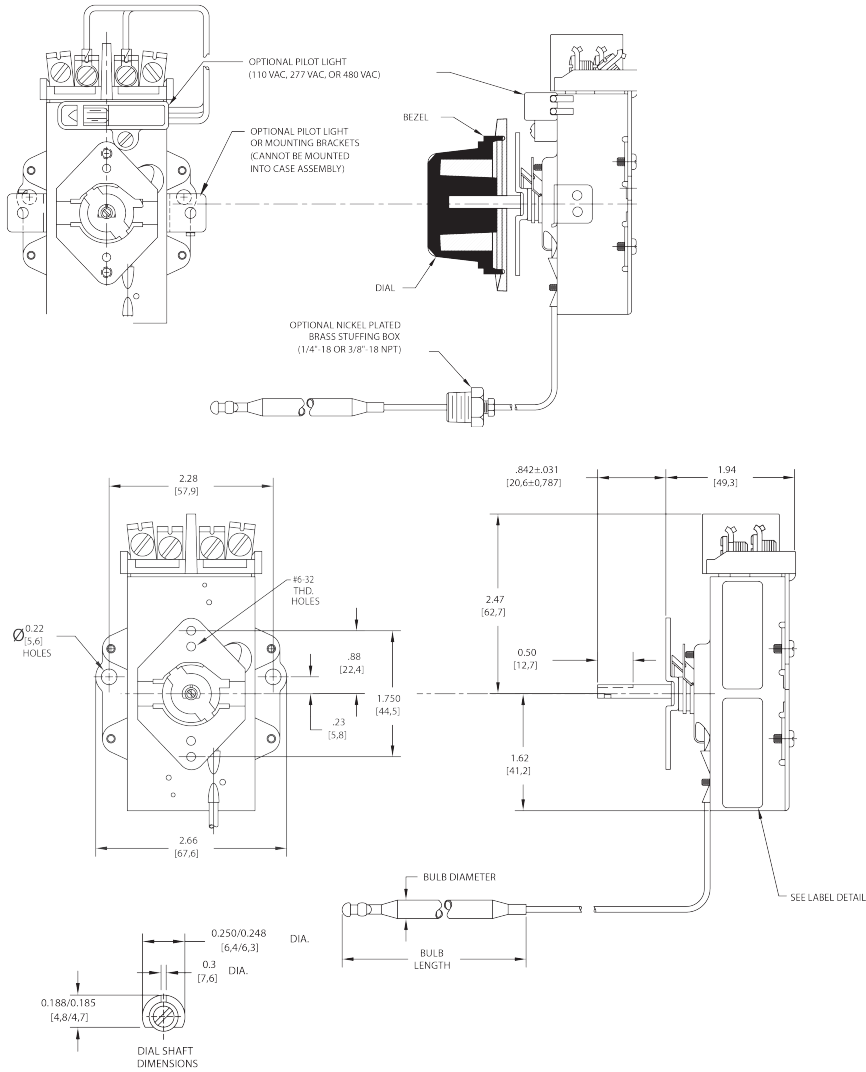
Part Numbers	Description	Dial Temperature Range	Capillary Length	Bulb Size	Dial Type	Mechanical Differential	Electrical Rating
5000-811	D1 Commercial Electric Thermostat with Pilot Light, 4-Way Dial, Bezel, Uni-Kit®	60°F to 250°F (15°C to 121°C)	60"	3/8" x 4-1/2"	4-Way	6°F (3°C)	120, 277V AC @ 30A 480V AC @ 21A
5000-851	D1 Commercial Electric Thermostat with Pilot Light, 4-Way Dial, Bezel, Uni-Kit	100°F to 550°F (38°C to 288°C)	60"	3/16" x 11-5/8" Nickel	4-Way	6°F (3°C)	120, 277V AC @ 30A 480V AC @ 21A





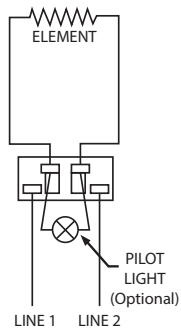
## Product Drawings

Product Dimensions - Dimensions are inches and [millimeters].

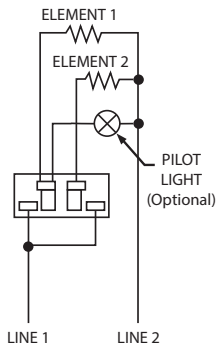


## Wiring Diagram

SINGLE ELEMENT  
DOUBLE POLE  
SINGLE PHASE



TWO ELEMENTS  
SINGLE POLE  
SINGLE PHASE



1 Year  
Limited  
Warranty

B23