

700-886

GAS VALVES - BLEED CONTROL

700 Series

The Robertshaw® Unitrol® 700 Series Bleed Control Gas Valves combine a manual main and pilot gas valve, a separate automatic safety pilot valve, pilot adjustment valve, and a diaphragm valve. The regulated models also feature “straight line” gas pressure regulation. Robertshaw diaphragm gas valves are single function, and are excellent replacements for solenoid gas valves. Models are available with or without a gas cock and regulated or non-regulated. Standard features include pilot gas outlet, pilot gas filter and pilot adjustment key.

Features and Benefits

- Normally closed solenoid
- Compact size with high flow rates
- Standard NEMA terminals
- Inlet filtered screen
- Various gas types: natural, manufactured, mixed, LP, and LP/air mixtures
- Multiple actuators available
- RoHS compliant

Specifications

Part Numbers	Description	Capacity	Inlet Size	Outlet Size	Pressure Regulation	Reducer Bushings Included	Comments
700-803	Bleed Control Gas Valve	305,000 BTU	3/4"	3/4"	NA	NA	Can be used on regulated LP systems and is Thermocouple driven
700-804	Bleed Control Gas Valve	305,000 BTU	3/4"	3/4"	3.5" WC Natural Gas	NA	Has slow opening feature which can be removed and is Thermocouple driven
700-886	Bleed Control Gas Valve	305,000 BTU	3/4"	3/4"	3.5" WC Natural Gas	1/2" (x2)	Thermopile driven
700-887	Bleed Control Gas Valve	240,000 BTU	1/2"	1/2"	4.0" WC Natural Gas	NA	Thermopile driven

RoHS



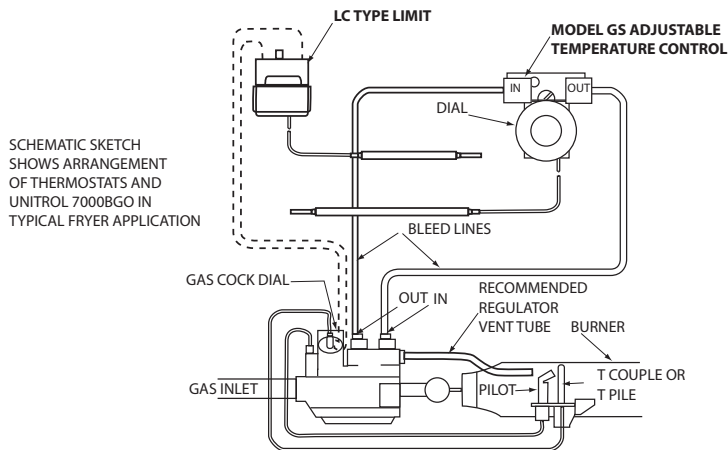
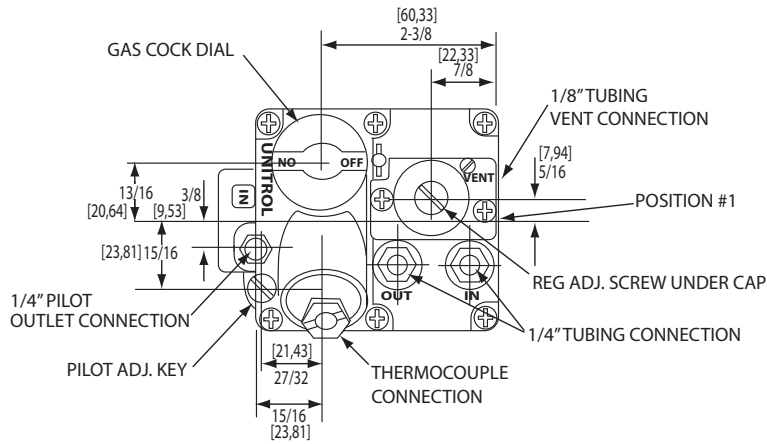
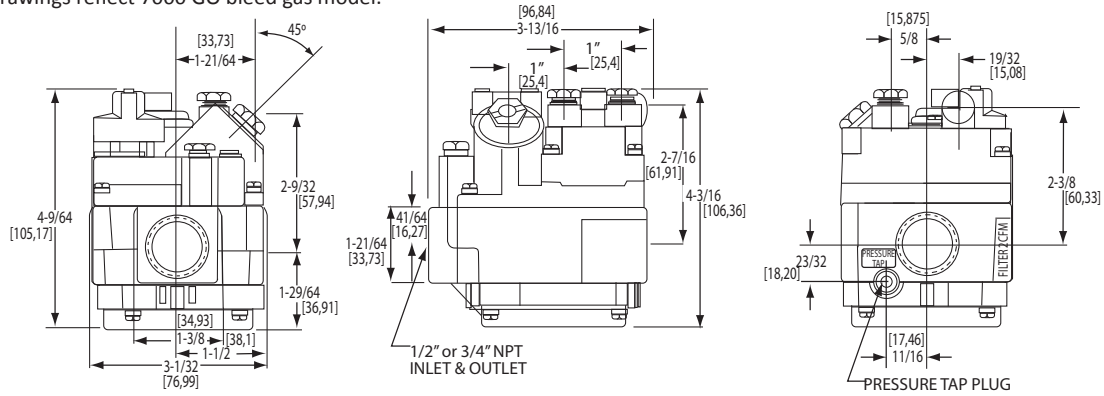
B30



Product Drawings

Product Dimensions - Dimensions are inches and [millimeters].

Drawings reflect 7000 GO bleed gas model.



1 Year Limited Warranty